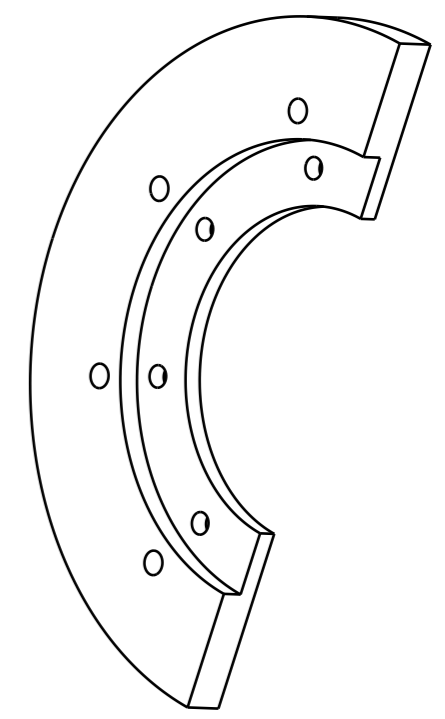
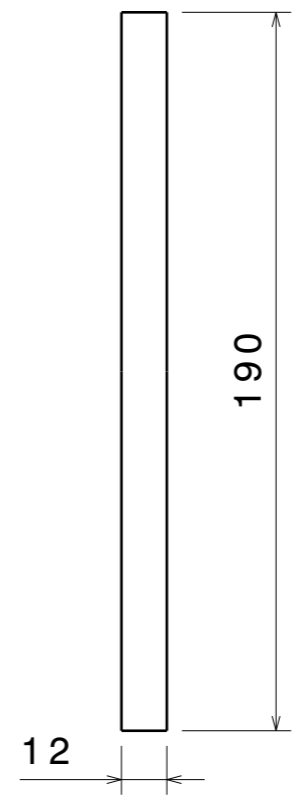
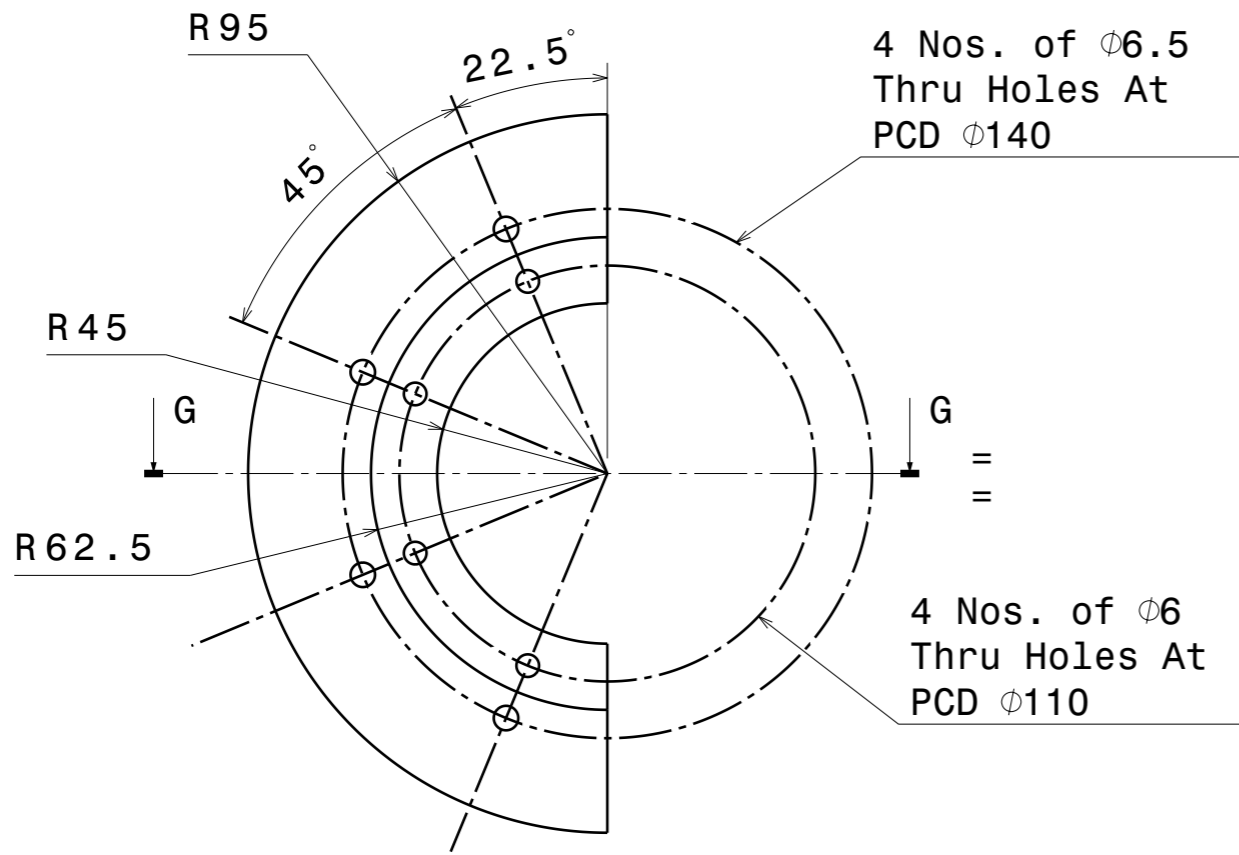


H G F E D C B A

4

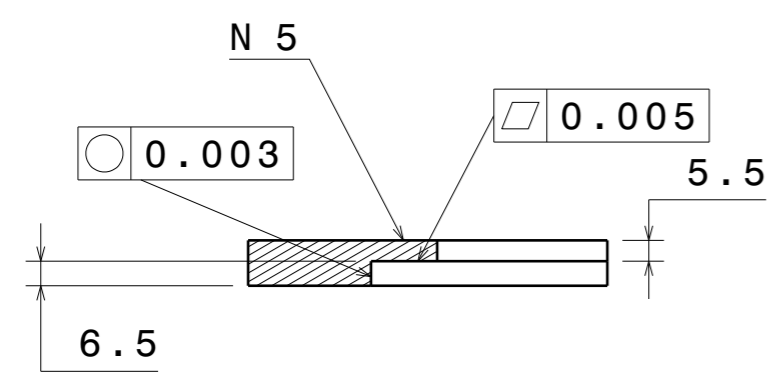


4

3

3

2



2

Material	OFHC Copper
Quantity	2

This drawing is our property. It can't be reproduced or communicated without our written agreement.

**INSITITUTE FOR PLASMA RESEARCH BHAT, GANDHINAGAR**

DRAWN BY	DATE
<b>KRISHANPAL</b>	10/10/2016
CHECKED BY	DATE
<b>SAMIRAN</b>	10/010/2016
DESIGNED BY	DATE
<b>DEVESH</b>	XXX

DRAWING TITLE			
<b>CONDUCTIVE FLANGE SECOUND STAGE H2 MIRROR</b>			
SIZE	DRAWING NUMBER	REV	
<b>A3</b>	<b>40KPRECOOLER-005</b>	<b>0</b>	
SCALE	1:1	WEIGHT (kg)	XXX
SHEET		5/5	

1

All dimenssions are in mm  
 Remove all sharp Edges  
 Specified Tolerances should be Followed

Ra Value Micrometer	Roughness Grade Number
0.8	N6
0.4	N5
0.2	N4

H G F E D C B A

H G F E D C B A

4

4

3

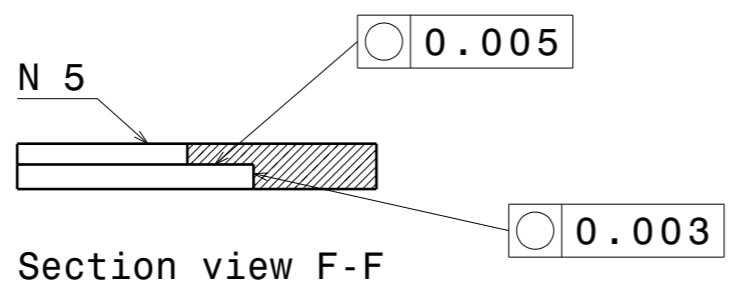
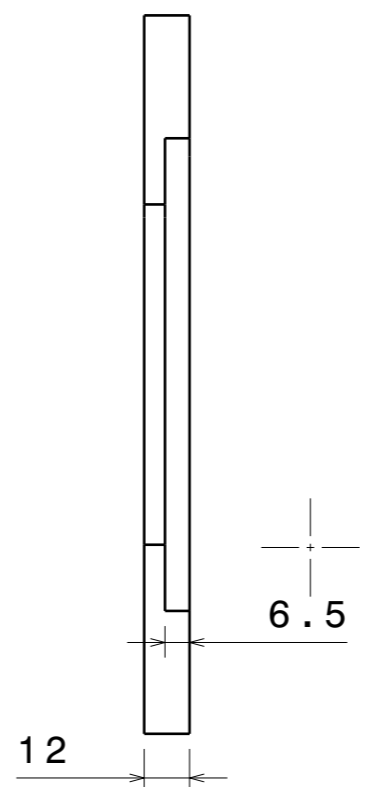
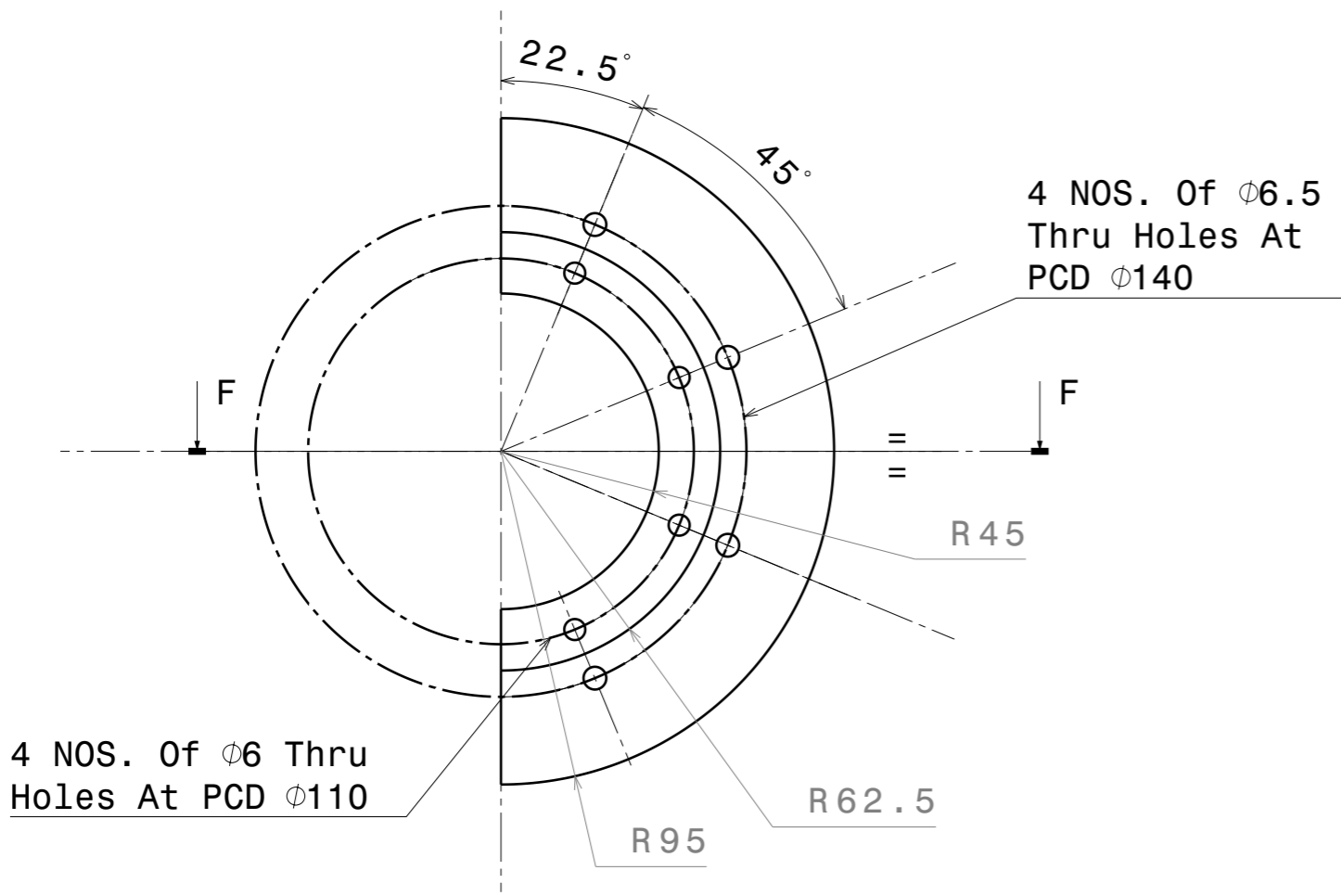
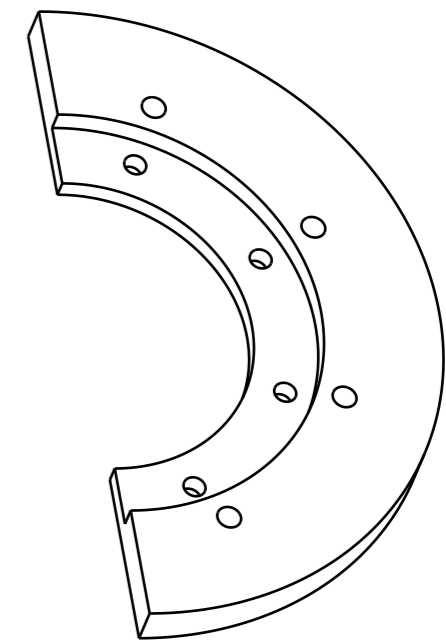
3

2

2

1

1



MATERIAL	OFHC COPPER
QUANTITY	2

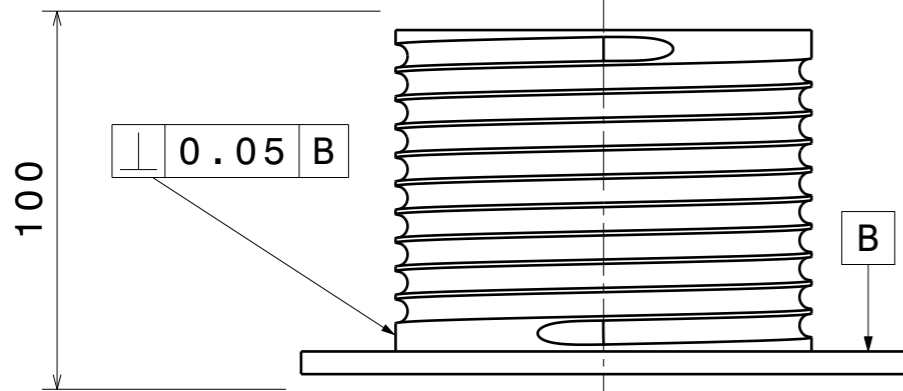
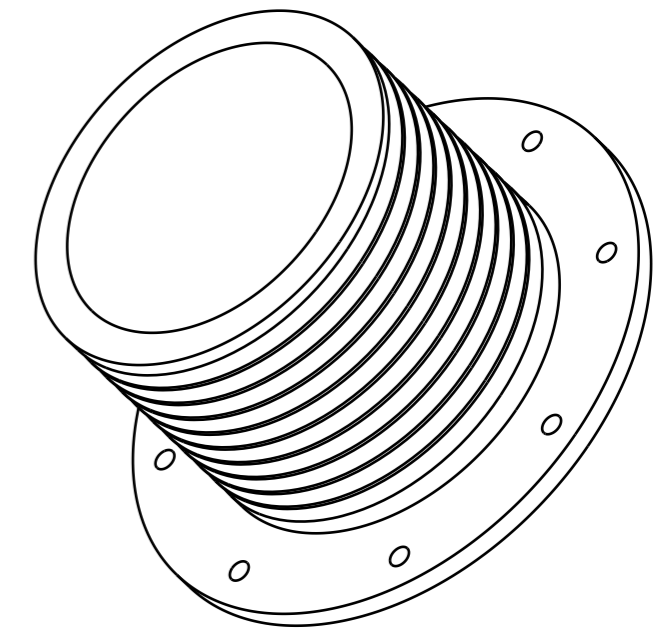
This drawing is our property. It can't be reproduced or communicated without our written agreement.		<b>INSITITUTE FOR PLASMA RESEARCH BHAT, GANDHINAGAR</b> DRAWING TITLE <b>CONDUCTIVE FLANGE SECOUND STAGE H2</b>		
DRAWN BY <b>KRISHANPAL</b>	DATE 10/10/2016			
CHECKED BY <b>SAMIRAN</b>	DATE 10/010/2016	SCALE 1:1	WEIGHT (kg) XXX	SHEET 4/5
DESIGNED BY <b>DEVESH</b>	DATE XXX			

All dimenssions are in mm	Ra Value Micrometer	Roughness Grade Number
Remove all sharp Edges	0.8	N6
Specified Tolerances should be Followed	0.4	N5
	0.2	N4

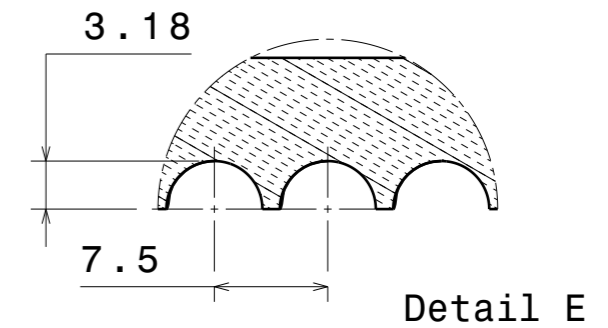
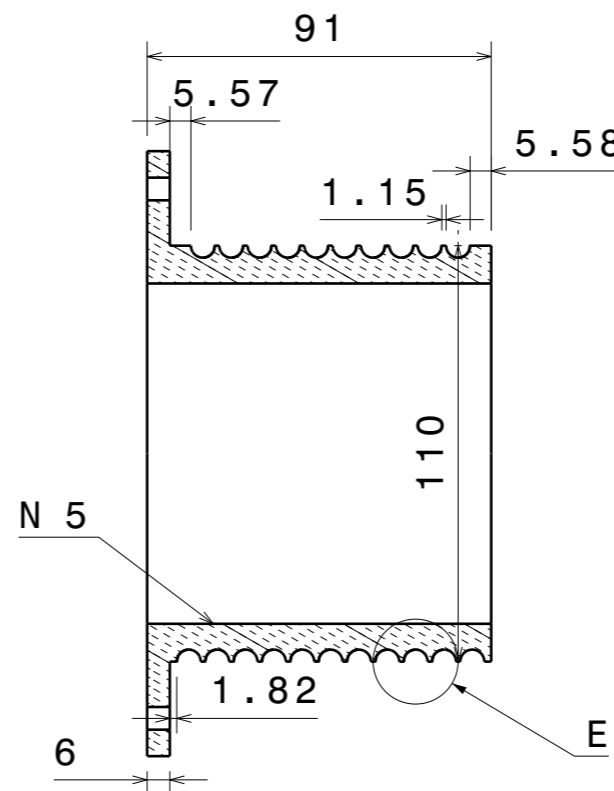
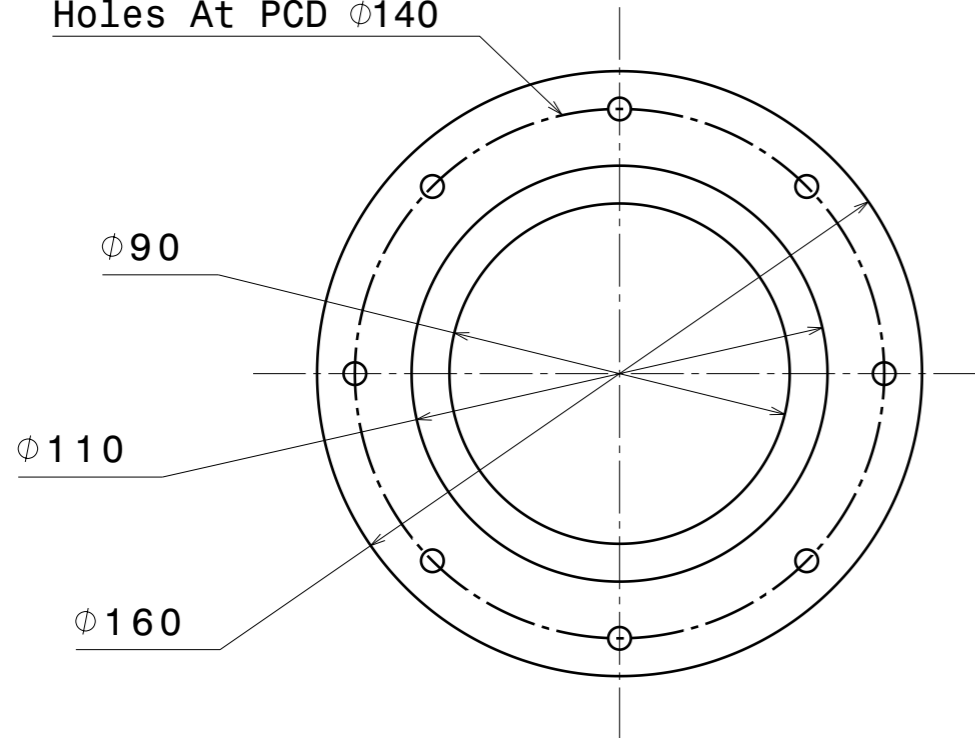
H G F E D C B A

HELIX CUT ANGLE

Pitch	7.5 mm
Height	75
Orientation	Counter Clockwise
Starting Angle	0 Deg
Taper Angle	0 Deg



8 NOS. of  $\phi 6$  Thru  
Holes At PCD  $\phi 140$



MATERIAL	OFHC COPPER
Quantity	2

This drawing is our property.  
It can't be reproduced  
or communicated without  
our written agreement.

**INSITITUTE FOR PLASMA  
RESEARCH BHAT, GANDHINAGAR**

DRAWING TITLE

**CRYOCOOLER FIRST STAGE EXTENSION**

DRAWN BY <b>KRISHANPAL</b>	DATE 10/7/2016
CHECKED BY <b>SAMIRAN</b>	DATE XXX
DESIGNED BY <b>DEVESH</b>	DATE XXX

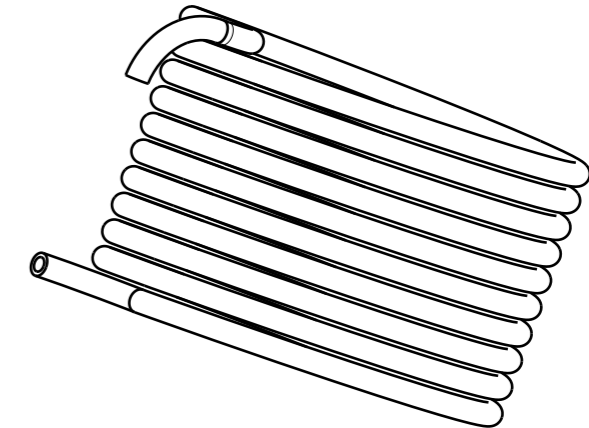
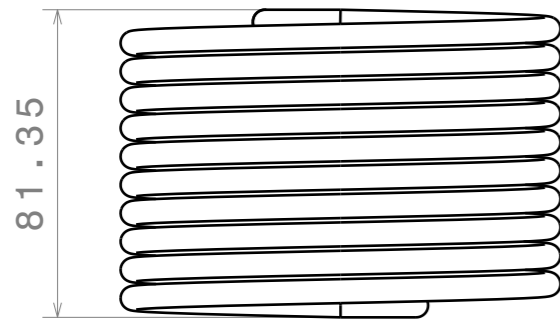
SIZE <b>A3</b>	DRAWING NUMBER <b>40KPRECOOLER-001</b>	REV <b>0</b>
SCALE <b>1:1</b>	WEIGHT (kg) <b>XXX</b>	SHEET <b>1/5</b>

All dimenssions are in mm  
Remove all sharp Edges  
Specified Tolerances should be Followed

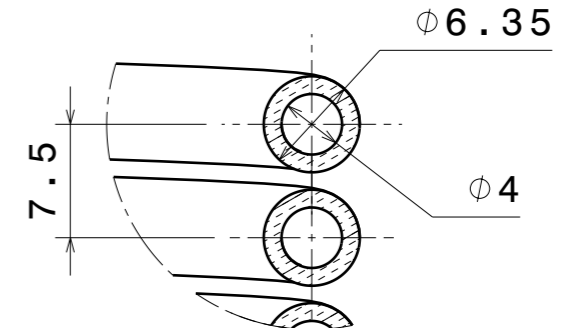
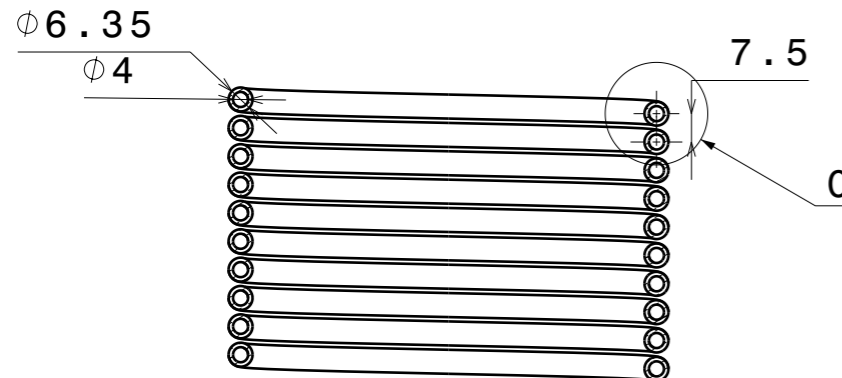
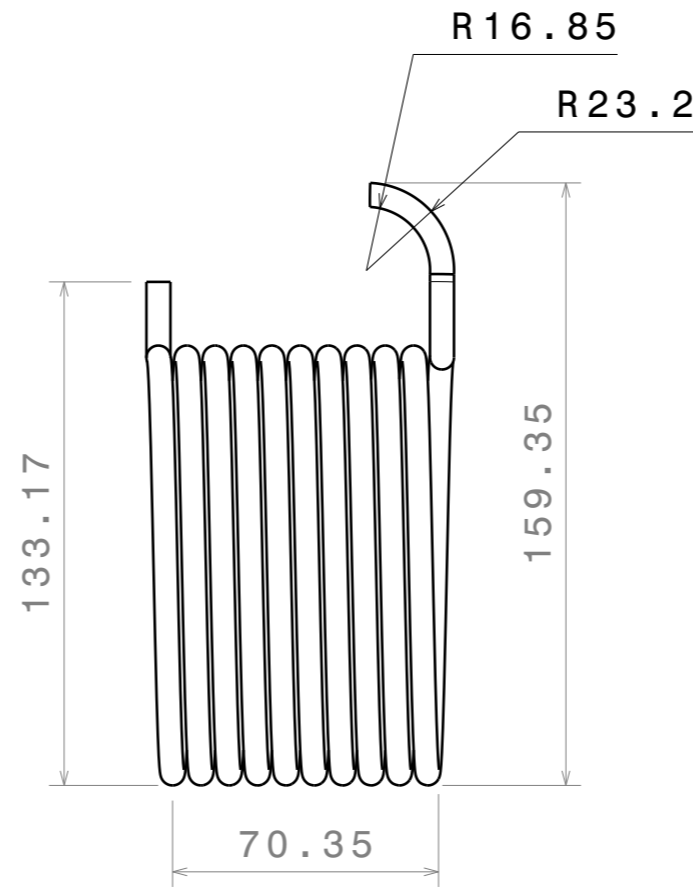
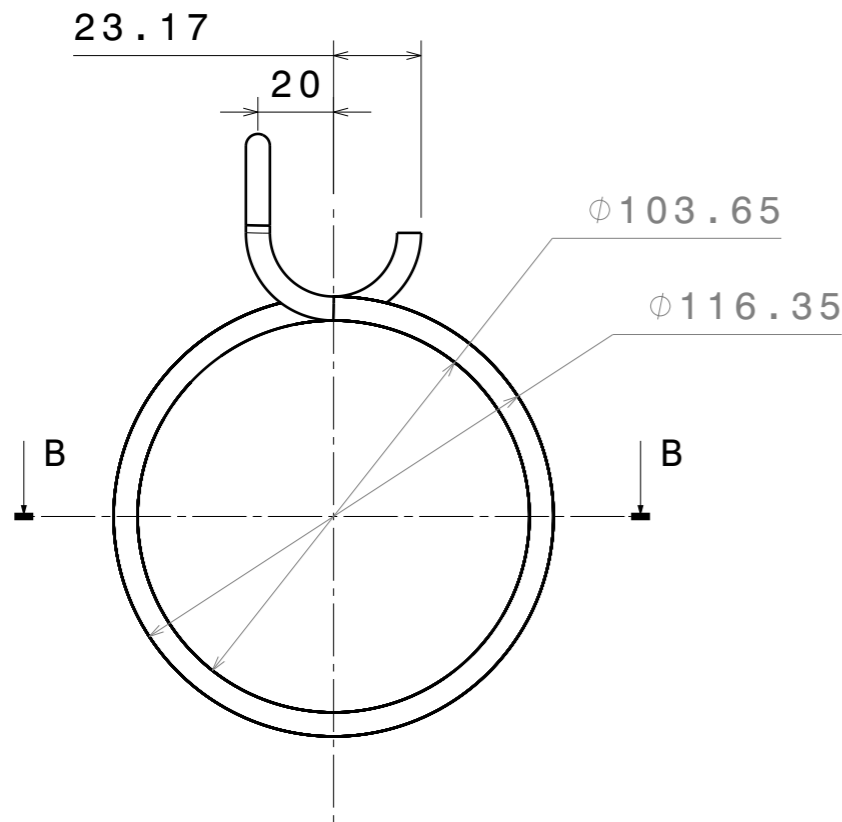
Ra Value Micrometer	Roughness Grade Number
0.8	N6
0.4	N5
0.2	N4

### Helix Coil Description

Pitch	7.5 mm
Height	75
Orientation	Counter Clockwise
Starting Angle	0 Deg
Taper Angle	0 Deg



Isometric view  
Scale: 1:2



MATERIAL	OFHC COPPER
Quantity	2

This drawing is our property. It can't be reproduced or communicated without our written agreement.		<b>INSITITUTE FOR PLASMA RESEARCH BHAT, GANDHINAGAR</b> DRAWING TITLE <b>SECOUND STAGE H2 PRECOOLER COIL</b>		
DRAWN BY <b>KRISHANPAL</b>	DATE 10/10/2016			
CHECKED BY <b>SAMIRAN</b>	DATE 10/10/2016	SCALE 1:1	WEIGHT (kg) XXX	SHEET 2/5
DESIGNED BY <b>DEVESH</b>	DATE XXX			

All dimenssions are in mm

Remove all sharp Edges

Specified Tolerances should be Followed

H

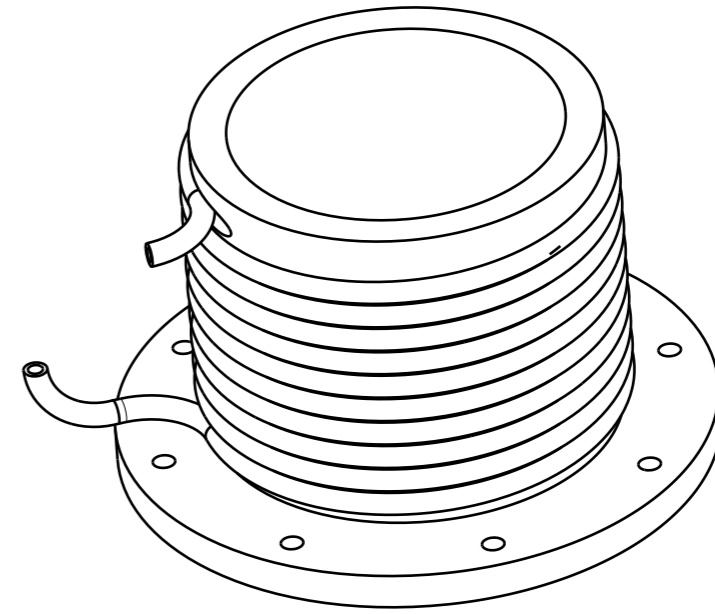
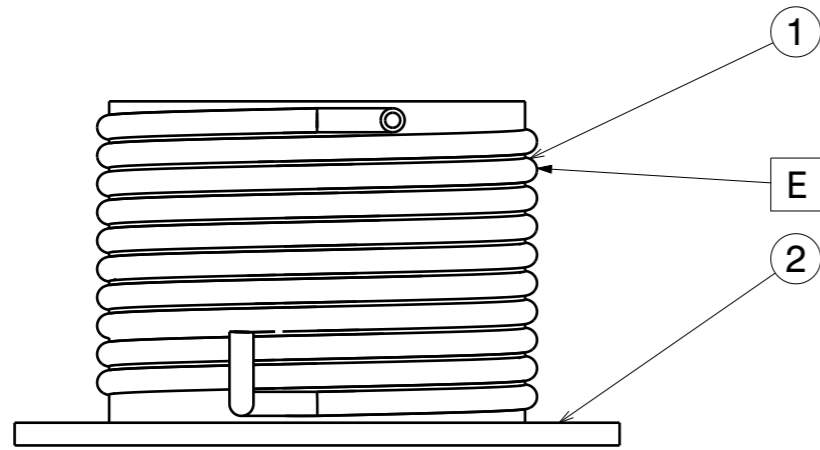
G

B

A

H G F E D C B A

4

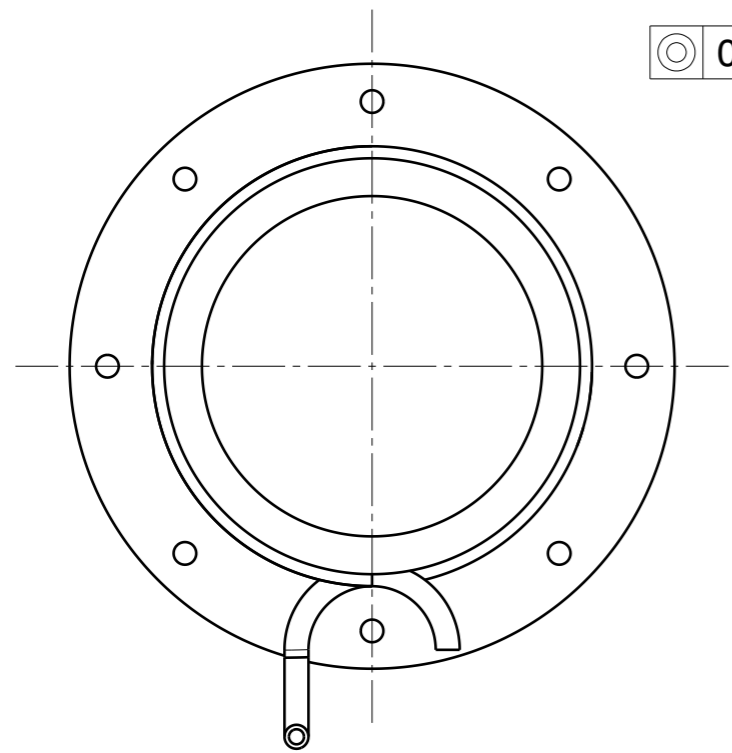


4

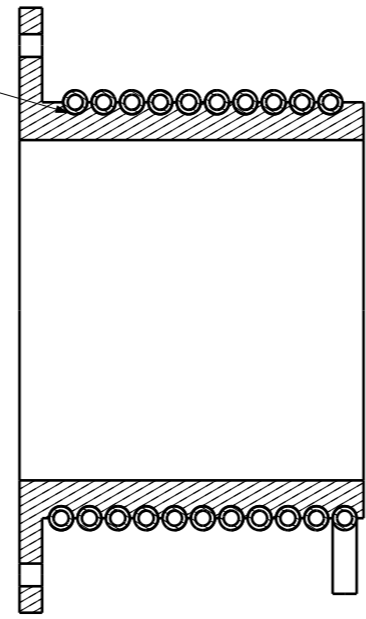
3

Component No	Component Name	Drawing No.	Material
1	Secound stage H2 Precooler Coil	40KPRECOOLER-002	OFHC COPPER
2	Cryocooler First Stage Extension	40KPRECOOLER-001	OFHC COPPER

3



⊙ 0.005 E



2

2

1

All dimenssions are in mm  
 All components of the assembly should be compatible with each other  
 Specified Tolerances should be Followed

This drawing is our property. It can't be reproduced or communicated without our written agreement.		<b>INSITITUTE FOR PLASMA RESEARCH BHAT, GANDHINAGAR</b>		
DRAWN BY <b>KRISHANPAL</b>		DRAWING TITLE <b>SECOUND STAGE H2 PRECOOLER ASSEMBLY</b>		
DATE 10/10/2016	CHECKED BY <b>SAMIRAN</b>	DATE 10/10/2016	SIZE <b>A3</b>	DRAWING NUMBER <b>ETPIS-EXTRUDER-003</b>
DESIGNED BY <b>DEVESH</b>	DATE XXX	SCALE 1:1	WEIGHT (kg) XXX	REV <b>0</b>
		SHEET	<b>3/5</b>	

1

H G B A