

This file has been cleaned of potential threats.

To view the reconstructed contents, please SCROLL DOWN to next page.

INSTITUTE FOR PLASMA RESEARCH

An Aided institute of department of Atomic Energy, Govt. of India)
Near Indira Bridge, Bhat. DIST.GANDHINAGAR - 382 428 (INDIA)
PHONE :(079-2396 2000),FAX :91-079-23962277
Web : www.ipr.res.in

MINOR FABRICATION WORKS ENQUIRY

Office Copy

ENQUIRY NO :IPR/MFW/18-19/42

Date : 06-08-2019

Due Date : 21-08-2019 13:00 IST

Please send your offer in sealed envelope specifying Inquiry No, Date & Due Date, ALONG WITH your credentials for the following items:

Important Note:

Please note that e-mail quotations are not acceptable however you may send your queries (if any) to **shukla@ipr.res.in**

Please Ensure that your sealed quotation reaches this office not later than above mentioned due date and time.

Kindly go through the following document properly before Quoting which are available on the IPR web portal i.e., <http://www.ipr.res.in/documents/tenders.html/> attached here with.

1. Technical specification as enclosed.
2. Instruction to the bidders & terms and Condition (refer Form NO:**IPR-MFW-01-V1**)
3. Bidding format(refer Biddingformat MFW-Bid.pdf)

GST fro Goods and Services (IGST/CGST/SGST TAX BENEFITS): PLEASE REFER clause no:8 of Form No:**IPR-MFW-01-V1**

QUOTATION SHOULD BE ADDRESSED TO **BRAJ KISHORE SHUKLA** ONLY.

Sr.No.	Description	Quantity	Rate
1	Fabrication of Busbar Support frame: Fabrication of mild steel MS busbar support frame with paint as per drawing and its installation at IPR (Material MS IS2062 – red oxide and paint as per standard)	4	No.

Free Issue Material

Sr.No.	Description	Quantity	Unit	Value
1	NIL	0.00		0.00

Note : Please quote with complete technical details (Technical Compliance sheet and product data sheet)

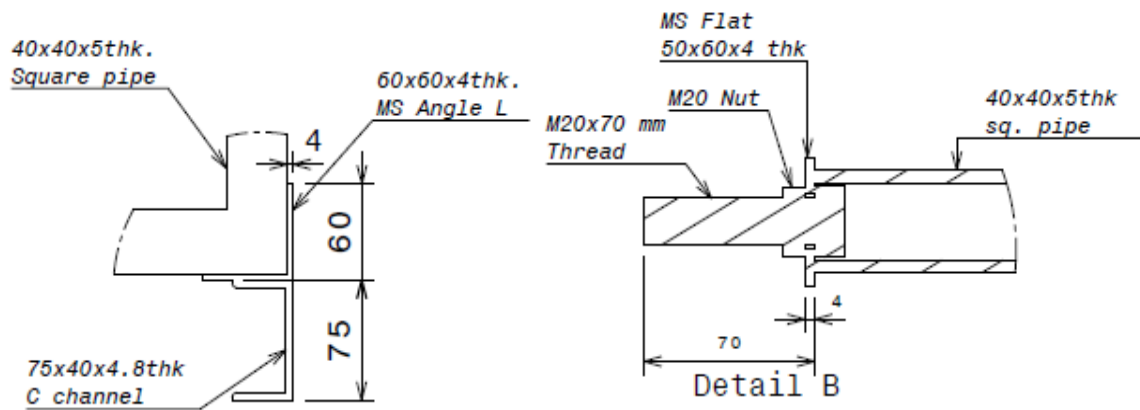
Encl:As per attachment

Sd/-
BRAJ KISHORE SHUKLA
Scientific Officer-G

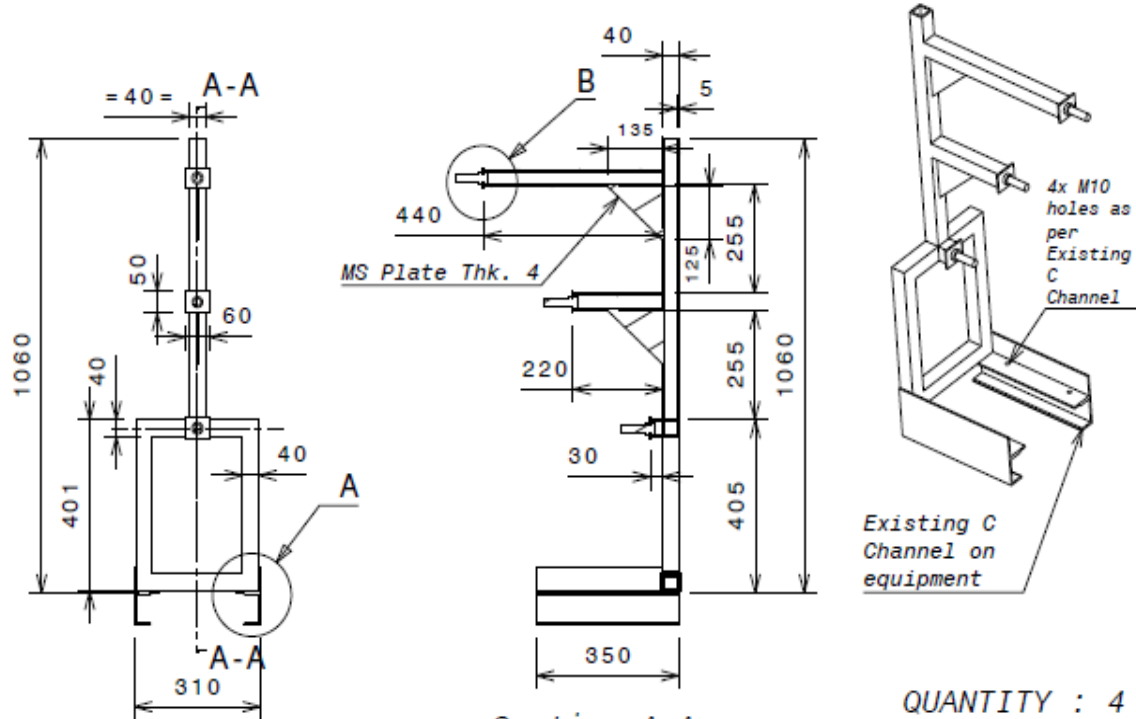
Technical specification for Busbar support frame

1. Bidder has to fabricate busbar support frame as per drawing provided
2. Material for support frame shall be MS and comply to IS 2062 standard
3. All hardware should be HTS grade
4. Material used in fabrication of frame and fabricated frame shall be free from sharp corners, edges and burrs
5. Frame shall be painted with Black color after completion of welding and drilling work
6. Busbar support frame shall be fixed on existing equipment by fabricator as per purchaser instruction
7. *Bidder has advise to visit the site before start of work*

Drawing for Busbar support frame



Detail A



Section A-A

QUANTITY : 4

All dimensions are in MM