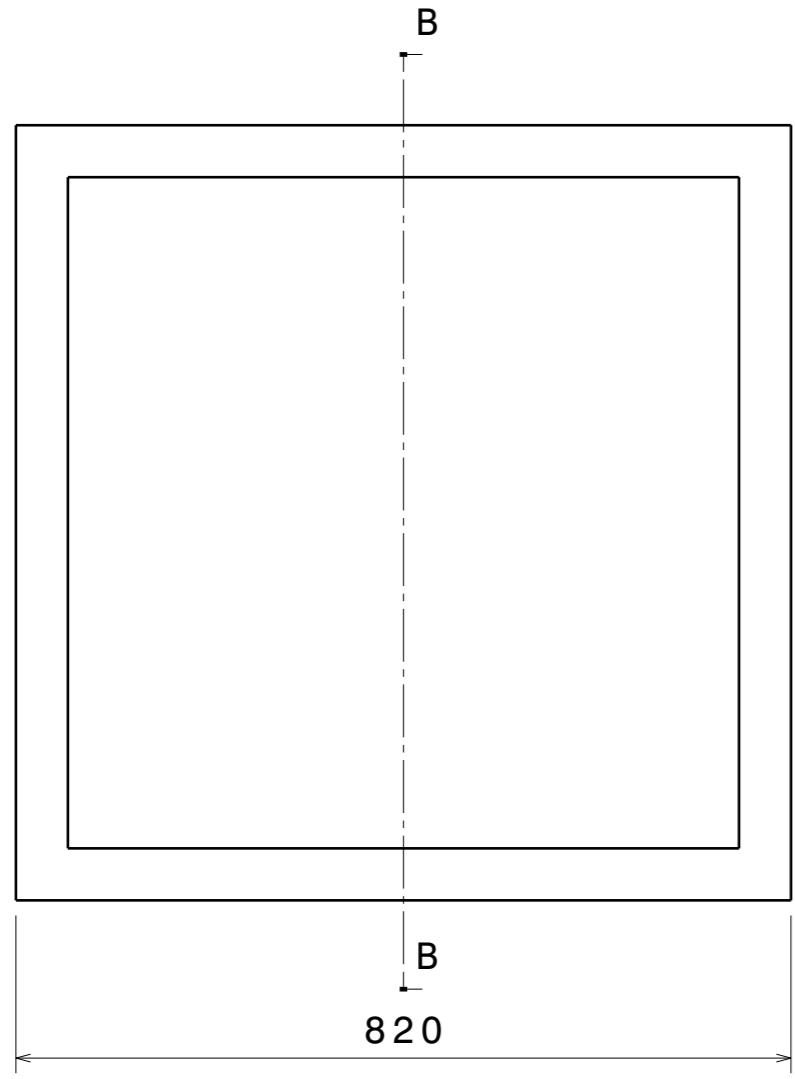
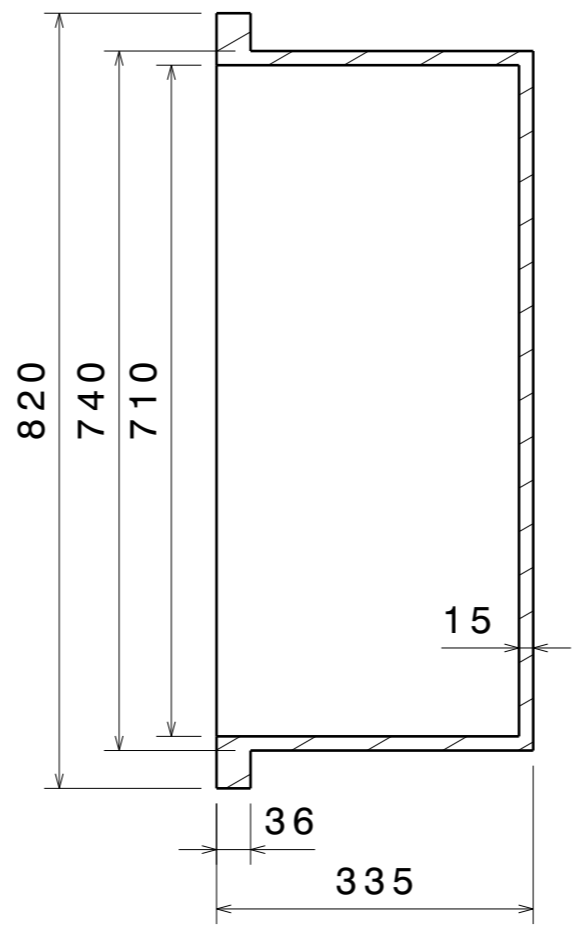


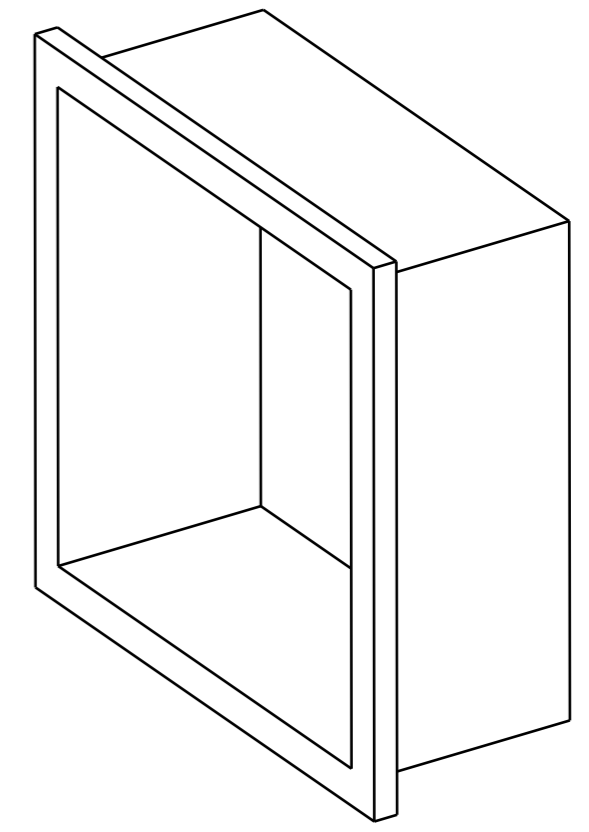
H G F E D C B A



Front view


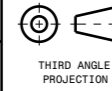


Section view B-B



Isometric view

1

DRG.NO	▽ 8-25	▽▽ 1.6-8	▽▽▽ 0.025-1.6	▽▽▽▽ < 0.025	REVISION COLUMN					ASS'Y GROUP/ DIVISION:	SIZE A3	 INSTITUTE FOR PLASMA RESEARCH BHAT, GANDHINAGAR-382 428. INDIA			
CO-ORDINATED BY					REV	ZONE	DESCRIPTION	DATE	REMARKS	APPROVED BY	ALL DIMENSIONS ARE IN 'mm' UNLESS OTHERWISE STATED		TITLE PART 1		
COMPONENT MANUFACTURING/FABRICATION AND ASSEMBLY AS PER ASME Y 14.5 AND ISO 2768											SCALE	NTS	DATE	 THIRD ANGLE PROJECTION	
											DRAWN	SK PATNAIK		REF DRG NO : IPR/APD/20/A3/CBUTF/B	REV 00
											CHECKED	ATIK MISTRY		DRG.NO IPR/APD/20/A3/CBUTF/B/03	SHEET 02 OF 05
											APPROVED				

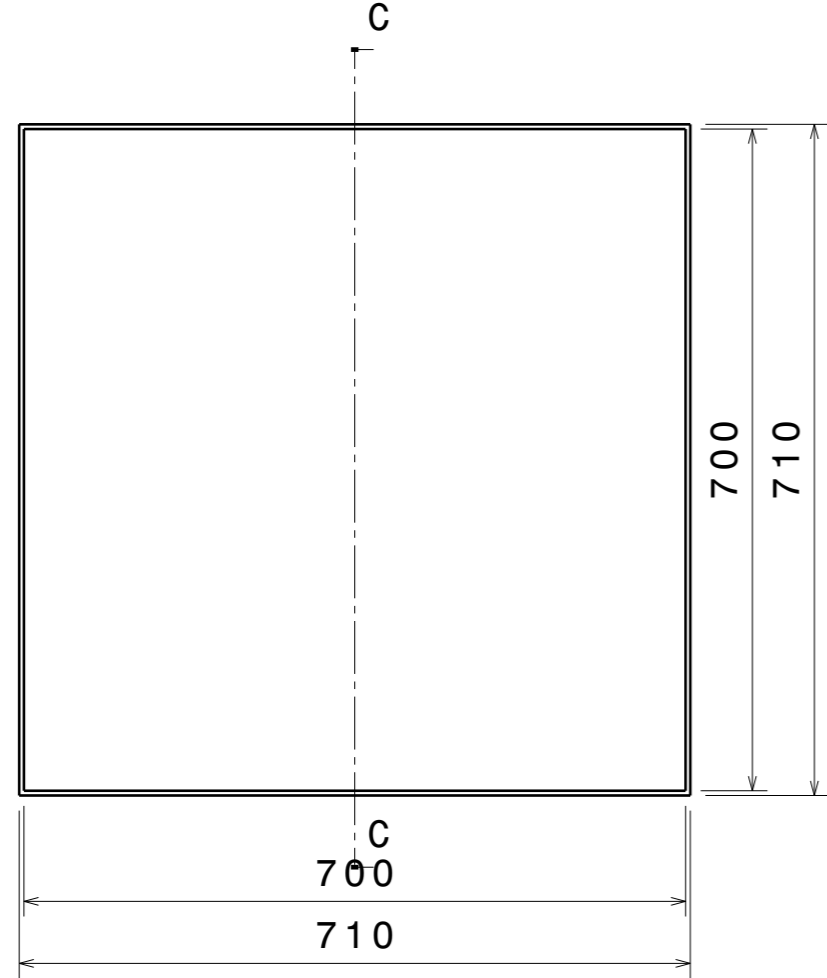
H G F E D C B A

H G F E D C B A

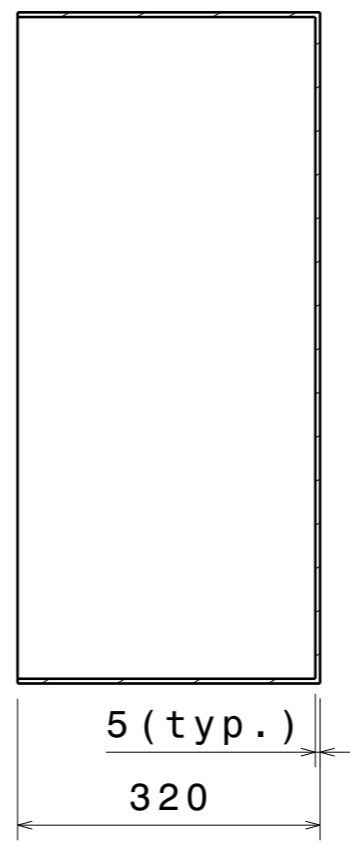
4

3

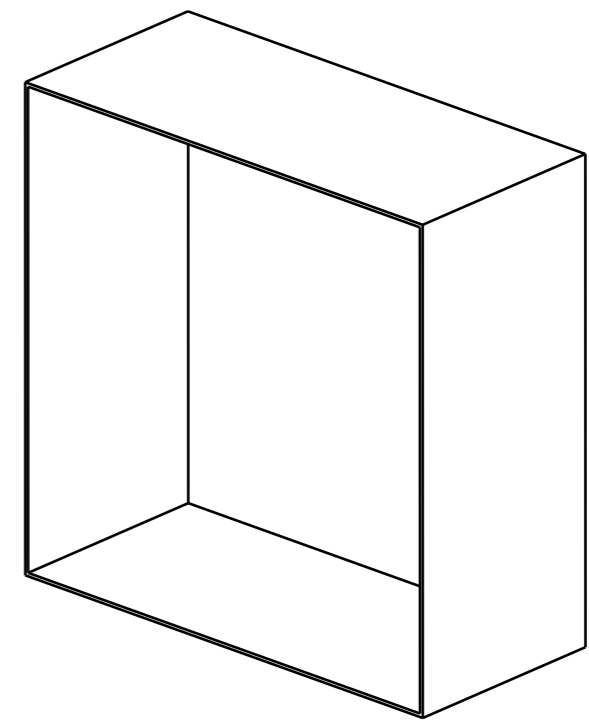
2



Front view


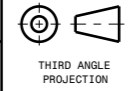


Section view C-C



Isometric view

2

DRG.NO	▽ 8-25	▽▽ 1.6-8	▽▽▽ 0.025-1.6	▽▽▽▽ < 0.025	REVISION COLUMN					ASS'Y GROUP/ DIVISION:	SIZE A3	 INSTITUTE FOR PLASMA RESEARCH BHAT, GANDHINAGAR-382 428. INDIA			
CO-ORDINATED BY					REV	ZONE	DESCRIPTION	DATE	REMARKS	APPROVED BY	ALL DIMENSIONS ARE IN 'mm' UNLESS OTHERWISE STATED		TITLE		
COMPONENT MANUFACTURING/FABRICATION AND ASSEMBLY AS PER ASME Y 14.5 AND ISO 2768											SCALE	NTS	DATE	 PART 2	
											DRAWN	SK PATNAIK			
											CHECKED	ATIK MISTRY		REF DRG NO : IPR/APD/20/A3/CBUTF/B	REV 00
											APPROVED			DRG.NO IPR/APD/20/A3/CBUTF/B/03	SHEET 03 OF 05

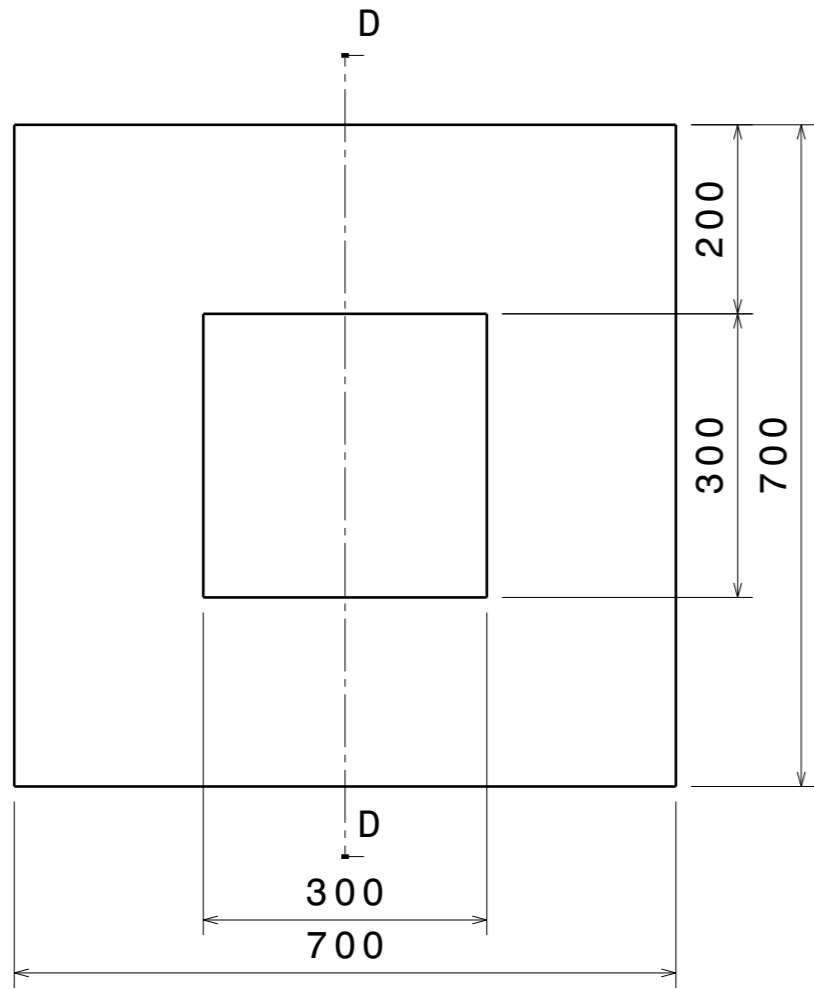
H G F E D C B A

4

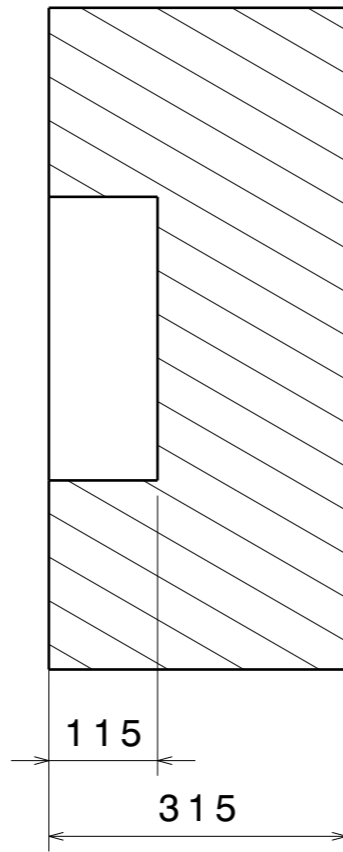
3

2

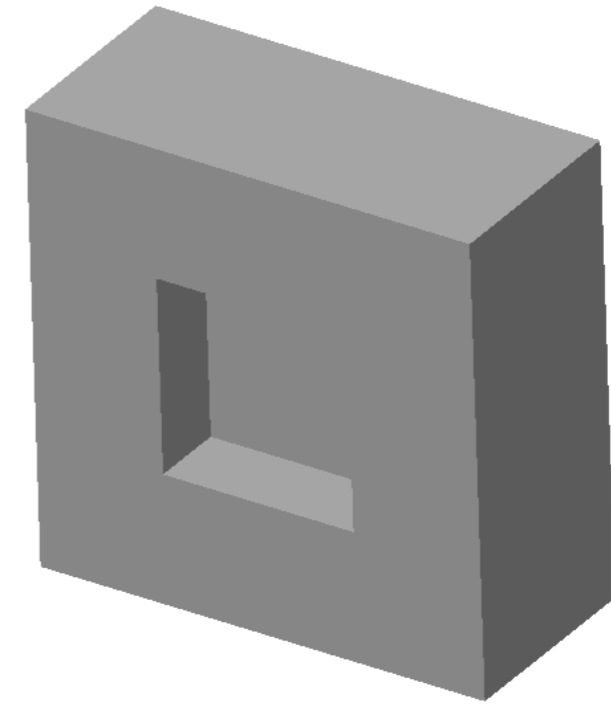
1



Front view


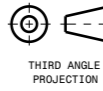


Section view D-D



Isometric view

3

DRG.NO	▽ 8-25	▽▽ 1.6-8	▽▽▽ 0.025-1.6	▽▽▽▽ < 0.025	REVISION COLUMN					ASS'Y GROUP/ DIVISION:	SIZE A3	 INSTITUTE FOR PLASMA RESEARCH BHAT, GANDHINAGAR-382 428. INDIA			
CO-ORDINATED BY					REV	ZONE	DESCRIPTION	DATE	REMARKS	APPROVED BY	ALL DIMENSIONS ARE IN 'mm' UNLESS OTHERWISE STATED		 TITLE PART 3		
COMPONENT MANUFACTURING/FABRICATION AND ASSEMBLY AS PER ASME Y 14.5 AND ISO 2768											SCALE	NTS	DATE	REF DRG NO : IPR/APD/20/A3/CBUTF/B	REV 00
											DRAWN	SK PATNAIK		DRG.NO IPR/APD/20/A3/CBUTF/B/03	SHEET 04 OF 05
											CHECKED	ATIK MISTRY			
											APPROVED				

H G F E D C B A

4

4

3

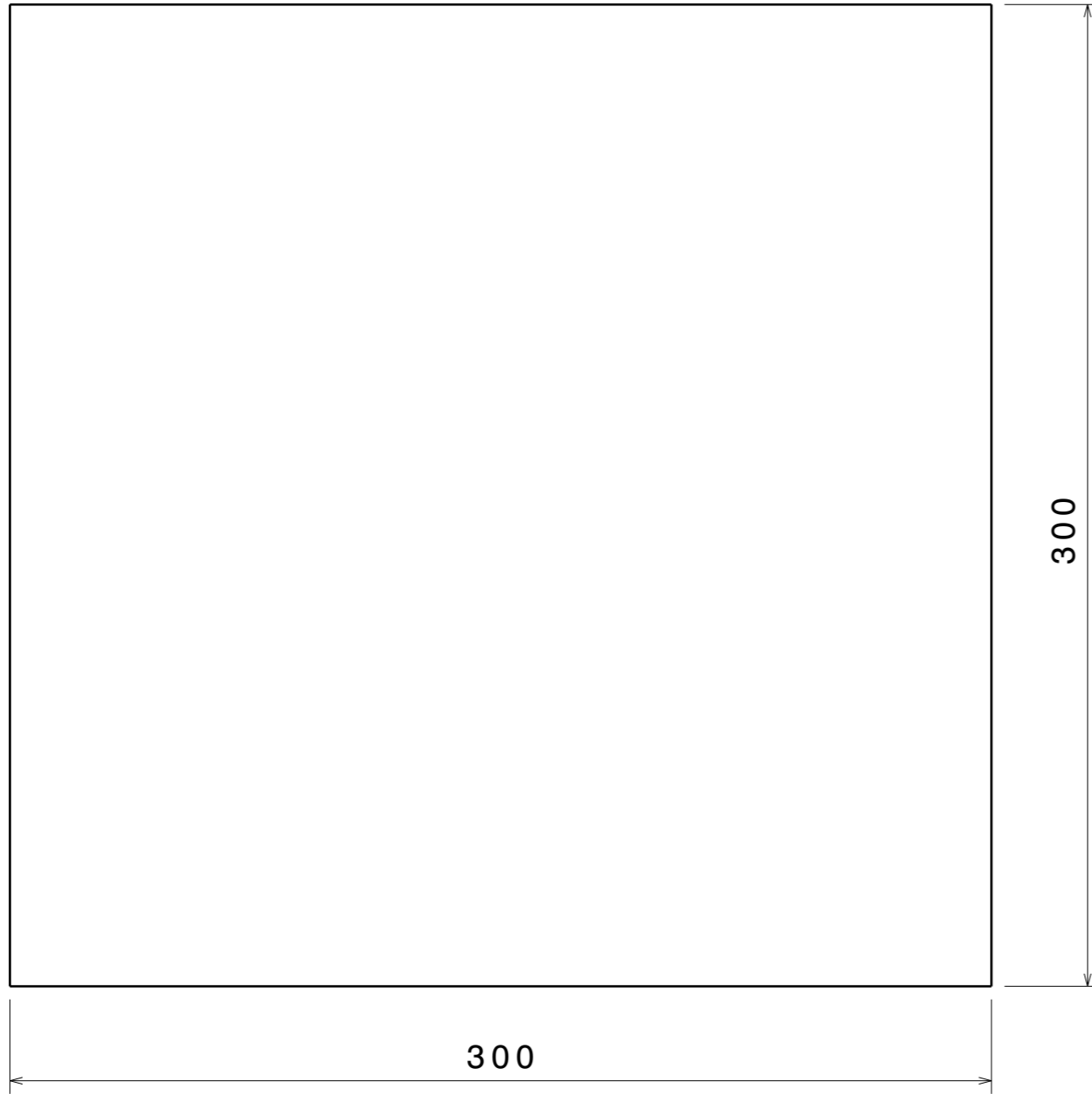
3

2

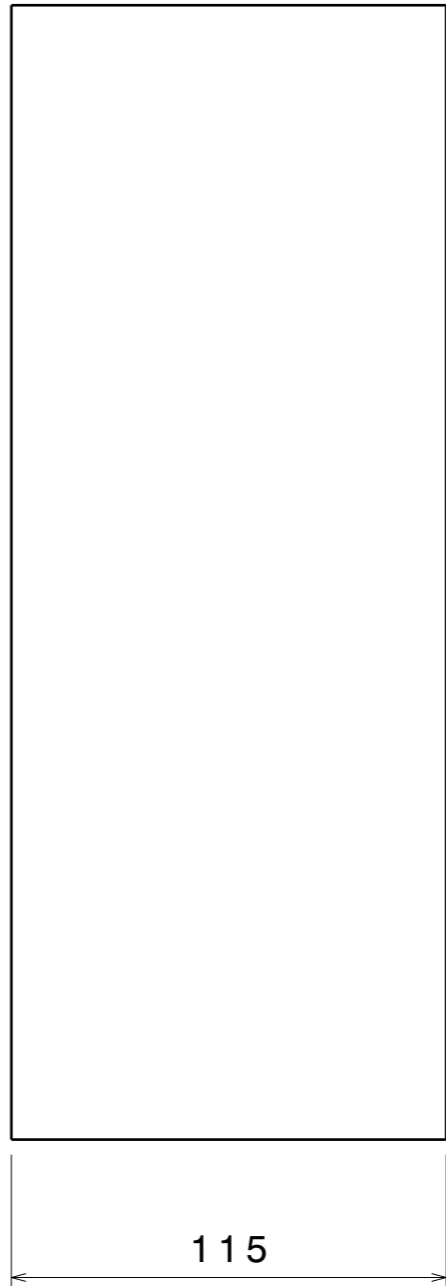
2

1

1


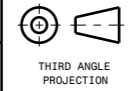


Front view



Right view

4

DRG.NO	▽ 8-25	▽▽ 1.6-8	▽▽▽ 0.025-1.6	▽▽▽▽ < 0.025	REVISION COLUMN					ASS'Y GROUP/ DIVISION:	SIZE A3	 INSTITUTE FOR PLASMA RESEARCH BHAT, GANDHINAGAR-382 428. INDIA				
CO-ORDINATED BY					REV	ZONE	DESCRIPTION	DATE	REMARKS	APPROVED BY	ALL DIMENSIONS ARE IN 'mm' UNLESS OTHERWISE STATED		 TITLE PART 4			
COMPONENT MANUFACTURING/FABRICATION AND ASSEMBLY AS PER ASME Y 14.5 AND ISO 2768											SCALE	NTS	DATE	REF DRG NO : IPR/APD/20/A3/CBUTF/B		REV 00
											DRAWN	SK PATNAIK		DRG.NO IPR/APD/20/A3/CBUTF/B/03		SHEET 05 OF 05
											CHECKED	ATIK MISTRY				
											APPROVED					

H G F E D C B A