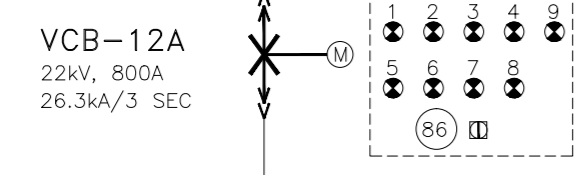
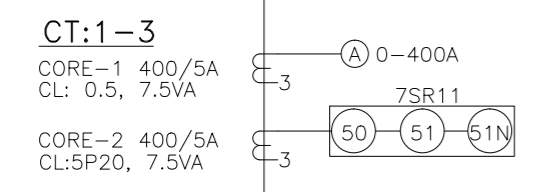
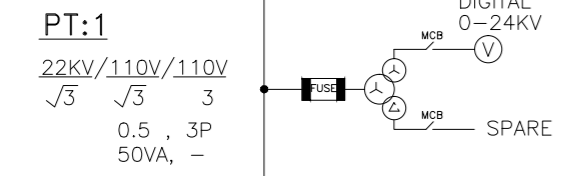


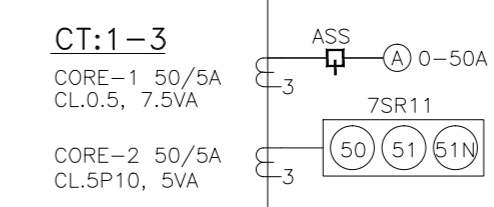
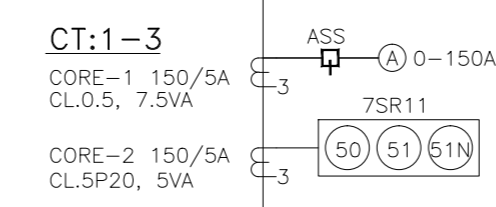
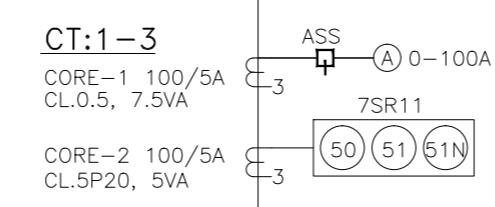
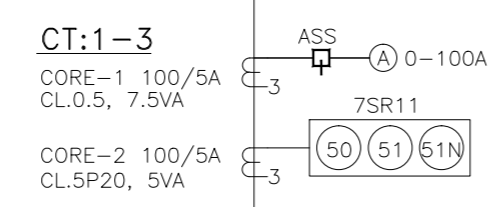
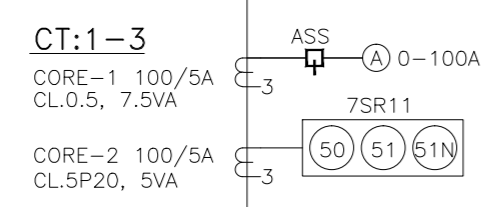
The reproduction, transmission or use of this document or its contents is not permitted without express written authority of the originator. All rights, including rights created by patent grant or registration of a utility model or design, are reserved.

INCOMING SUPPLY S11 PANEL

1RX3CX400 SQ.MM
22KV (E) AL. XLPE CABLE



22KV, 1250A AL.BUSBAR , 26.3KA FOR 3 SECS



1RX3CX185 SQ.MM
22KV (E) AL. XLPE CABLE

AGPS TR-1
2750 KVA

1RX3CX185 SQ.MM
22KV (E) AL. XLPE CABLE

AGPS TR-2
2750 KVA

1RX3CX185 SQ.MM
22KV (E) AL. XLPE CABLE

AGPS TR-3
2750 KVA

1RX3CX185 SQ.MM
22KV (E) AL. XLPE CABLE

ISEPS TR-1
5000 KVA

1RX3CX185 SQ.MM
22KV (E) AL. XLPE CABLE

RIDPS TR-1
550 KVA

**22KV SWITCHBOARD
DNB BUS, S12 PANEL**

LEGENDS:-

SR. NO.	SYMBOL	DESCRIPTION
1	X-M	VACCUUM CIRCUIT BREAKER
2	E ₃	CURRENT TRANSFORMER
3	DA	DIGITAL AMMETER
4	A	ANALOG AMMETER
5	AS	AMMETER SELECTOR SWITCH
6	DV	DIGITAL VOLTMETER
7	PT	POTENTIAL TRANSFORMER
8	F	FUSES
9	L	INDICATING LAMPS
10	TNC	TRIP-NEUTRAL-CLOSE
11	PF	PROTECTION FUNCTION

LEGEND FOR EQUIPMENTS:-

- PT - POTENTIAL TRANSFORMER
- CT - CURRENT TRANSFORMER
- CB - CIRCUIT BREAKER
- TR - TRANSFORMER
- M - MOTOR

LEGEND FOR PROTECTIONS:-

- 27 - UNDERVOLTAGE PROTECTION
- 86 - MASTER TRIP RELAY
- 50 - INSTANTANEOUS OVER CURRENT PROTECTION
- 51 - IDMTL OVER CURRENT PROTECTION
- 51N - EARTH FAULT PROTECTION
- 30 - AUXILARY RELAY

LEGEND FOR INDICATING LAMPS:-

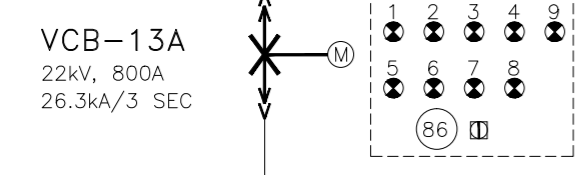
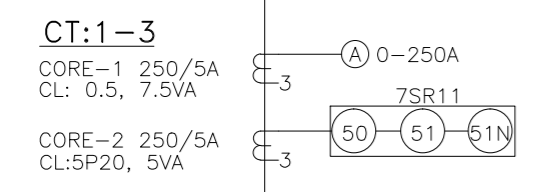
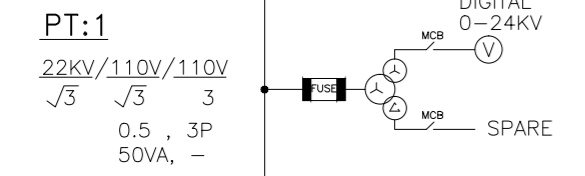
- 1L - BREAKER ON (RED)
- 2L - BREAKER OFF (GREEN)
- 3L - TRIP (AMBER)
- 4L - TRIP CKT. HEALTHY (WHITE)
- 5L - PHASE ON (RED)
- 6L - PHASE ON (YELLOW)
- 7L - PHASE ON (BLUE)
- 8L - DC SUPPLY ON (RED)
- 9L - SPRING CHARGED (BLUE)

Date	11.04.14	Client :-	ITER-INDIA, INSTITUTE FOR PLASMA RESEARCH, GANDHINAGAR, GUJARAT	SIEMENS LTD	Project :	132 kV SUBSTATION EXPANSION'14	Sales Ref. :	=
Prep	KTH	Consultant:-		CHENNAI OFFICE	Work :	22kV & 11kV SWITCHBOARDS	Item No. :	NA
Ckd.	KSG	Original/Replacement for/Replaced by :-			Details :	22KV BOARD - S12 SLD	Qty. :	NA
Issue	Remarks	Date	Name	Norm.	W.O.	Drg.No.:-	(3) G 71470 - A B 060 - 2 S 32 - R 0	Sh. 5

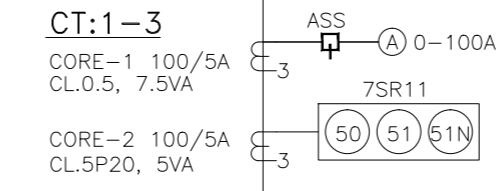
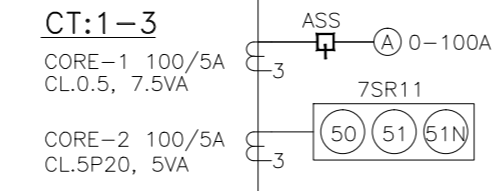
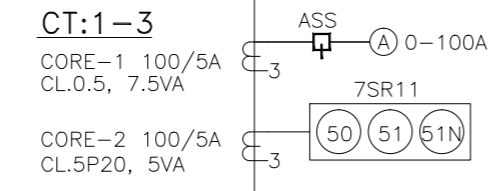
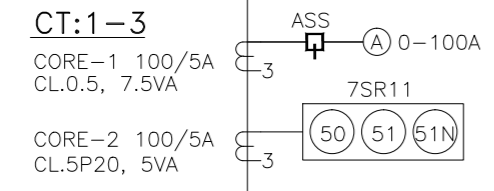
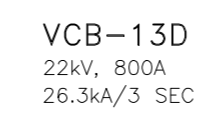
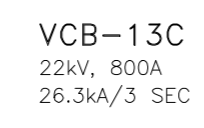
The reproduction, transmission or use of this document or its contents is not permitted without express written authority of the copyright owner. All rights, including rights created by patent grant or registration of a utility model or design, are reserved.

INCOMING SUPPLY S11 PANEL

1RX3CX400 SQ.MM
22KV (E) AL. XLPE CABLE



22KV, 1250A AL.BUSBAR, 26.3KA FOR 3 SECS



1RX3CX185 SQ.MM
22KV (E) AL. XLPE CABLE

1RX3CX185 SQ.MM
22KV (E) AL. XLPE CABLE

1RX3CX185 SQ.MM
22KV (E) AL. XLPE CABLE

1RX3CX185 SQ.MM
22KV (E) AL. XLPE CABLE

END STAGE TR CHAIN -1, 2800KVA

DRIVER STAGE TR CHAIN -1, 1200KVA

END STAGE TR CHAIN -2, 2800KVA

DRIVER STAGE TR CHAIN -3, 1200KVA

22KV SWITCHBOARD IC BUS, S13 PANEL

LEGENDS:-

SR. NO.	SYMBOL	DESCRIPTION
1	X-M	VACCUUM CIRCUIT BREAKER
2	E-3	CURRENT TRANSFORMER
3	DA	DIGITAL AMMETER
4	A	ANALOG AMMETER
5	AS	AMMETER SELECTOR SWITCH
6	DV	DIGITAL VOLTMETER
7	PT	POTENTIAL TRANSFORMER
8	F	FUSES
9	L	INDICATING LAMPS
10	TNC	TRIP-NEUTRAL-CLOSE
11	P	PROTECTION FUNCTION

LEGEND FOR EQUIPMENTS:-

- PT - POTENTIAL TRANSFORMER
- CT - CURRENT TRANSFORMER
- CB - CIRCUIT BREAKER
- TR - TRANSFORMER
- M - MOTOR

LEGEND FOR PROTECTIONS:-

- 27 - UNDERVOLTAGE PROTECTION
- 86 - MASTER TRIP RELAY
- 50 - INSTANTANEOUS OVER CURRENT PROTECTION
- 51 - IDMTL OVER CURRENT PROTECTION
- 51N - EARTH FAULT PROTECTION
- 30 - AUXILIARY RELAY

LEGEND FOR INDICATING LAMPS:-

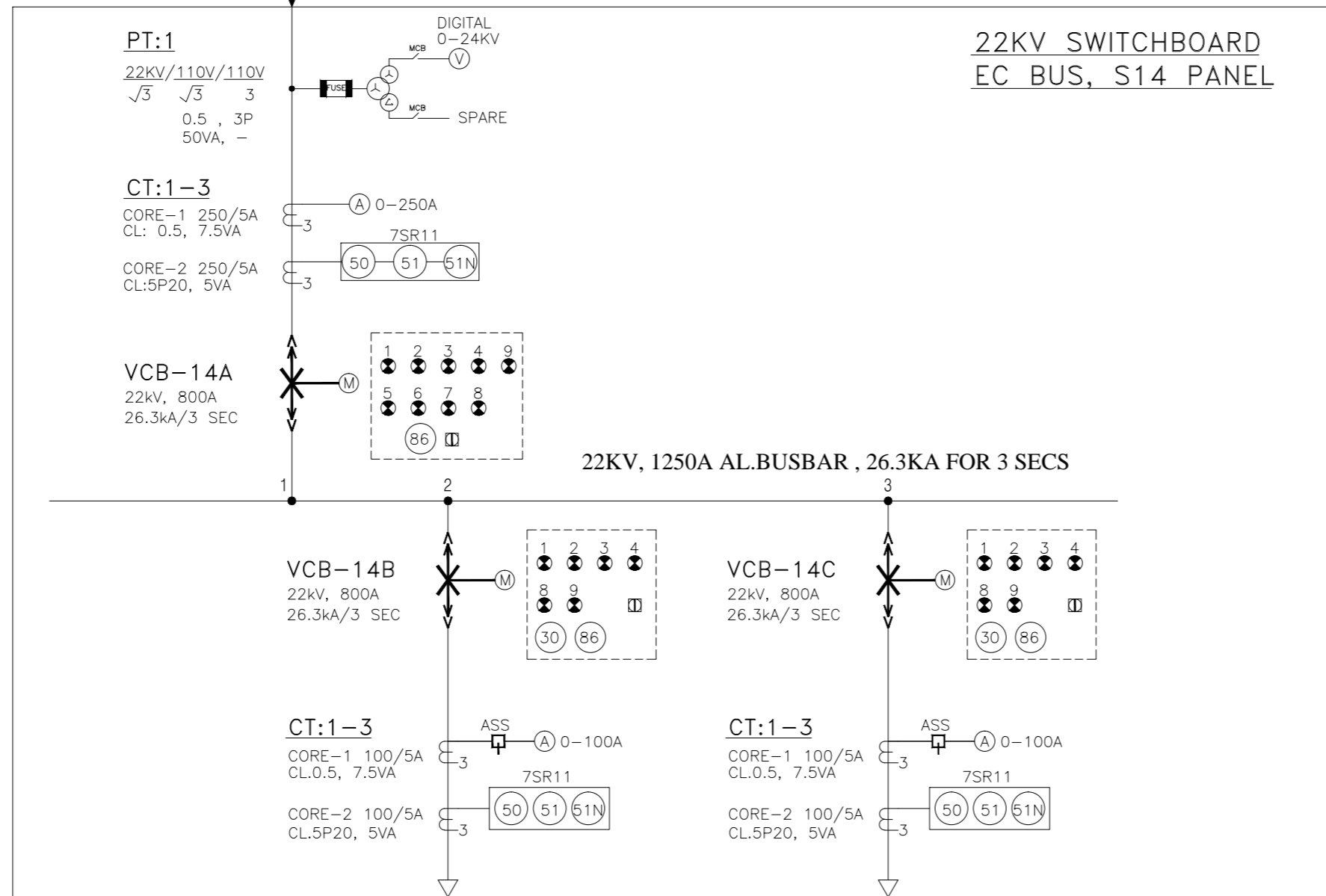
- 1 - BREAKER ON (RED)
- 2 - BREAKER OFF (GREEN)
- 3 - TRIP (AMBER)
- 4 - TRIP CKT. HEALTHY (WHITE)
- 5 - PHASE ON (RED)
- 6 - PHASE ON (YELLOW)
- 7 - PHASE ON (BLUE)
- 8 - DC SUPPLY ON (RED)
- 9 - SPRING CHARGED (BLUE)

Date	11.04.14	Client :-	ITER-INDIA, INSTITUTE FOR PLASMA RESEARCH, GANDHINAGAR, GUJARAT	SIEMENS LTD	Project :	132 kV SUBSTATION EXPANSION'14	Sales Ref. :	=
Prep	KTH	Consultant:-		CHENNAI OFFICE	Work :	22kV & 11kV SWITCHBOARDS	Item No. :	NA
Ckd.	KSG	Original/Replacement for/Replaced by :-			Details :	22KV BOARD - S13 SLD	Qty. :	NA
Issue	Remarks	Date	Name	Norm.	W.O.	Drg.No.:-	(3) G 7 1 4 7 0 - A B 0 6 0 - 2 S 3 2 - R 0	Sh. 6
1		2						+ Sh.

The reproduction, transmission or use of this document or its contents is not permitted without express written authority of the originator. All rights, including rights created by patent grant or registration, of utility model or design, are reserved.

INCOMING SUPPLY S11 PANEL

1RX3CX400 SQ.MM
22KV (E) AL. XLPE CABLE



**22KV SWITCHBOARD
EC BUS, S14 PANEL**

LEGENDS:-

SR. NO.	SYMBOL	DESCRIPTION
1	X-M	VACCUUM CIRCUIT BREAKER
2	E-3	CURRENT TRANSFORMER
3	DA	DIGITAL AMMETER
4	A	ANALOG AMMETER
5	ASS	AMMETER SELECTOR SWITCH
6	DV	DIGITAL VOLTMETER
7	PT	POTENTIAL TRANSFORMER
8	86	FUSES
9	8	INDICATING LAMPS
10	50	TRIP-NEUTRAL-CLOSE
11	51	PROTECTION FUNCTION

LEGEND FOR EQUIPMENTS:-

- PT - POTENTIAL TRANSFORMER
- CT - CURRENT TRANSFORMER
- CB - CIRCUIT BREAKER
- TR - TRANSFORMER
- M - MOTOR

LEGEND FOR PROTECTIONS:-

- 27 - UNDERVOLTAGE PROTECTION
- 86 - MASTER TRIP RELAY
- 50 - INSTANTANEOUS OVER CURRENT PROTECTION
- 51 - IDMTL OVER CURRENT PROTECTION
- 51N - EARTH FAULT PROTECTION
- 30 - AUXILIARY RELAY

LEGEND FOR INDICATING LAMPS:-

- 1-8 - BREAKER ON (RED)
- 2-8 - BREAKER OFF (GREEN)
- 3-8 - TRIP (AMBER)
- 4-8 - TRIP CKT. HEALTHY (WHITE)
- 5-8 - PHASE ON (RED)
- 6-8 - PHASE ON (YELLOW)
- 7-8 - PHASE ON (BLUE)
- 8-8 - DC SUPPLY ON (RED)
- 9-8 - SPRING CHARGED (BLUE)

Date	11.04.14	Client :-	ITER-INDIA, INSTITUTE FOR PLASMA RESEARCH, GANDHINAGAR, GUJARAT	SIEMENS LTD	Project :	132 kV SUBSTATION EXPANSION'14	Sales Ref. :	=
Prep	KTH	Consultant:-		CHENNAI OFFICE	Work :	22kV & 11kV SWITCHBOARDS	Item No. :	NA
Ckd.	KSG	Original/Replacement for/Replaced by :-			Details :	22KV BOARD - S14 SLD	Qty. :	NA
Issue	Remarks	Date	Name	Norm.	W.O.	Drg.No.:-	(3) G 71470 - A B 060 - 2 S 3 2 - R 0	Sh. 7 Sh.